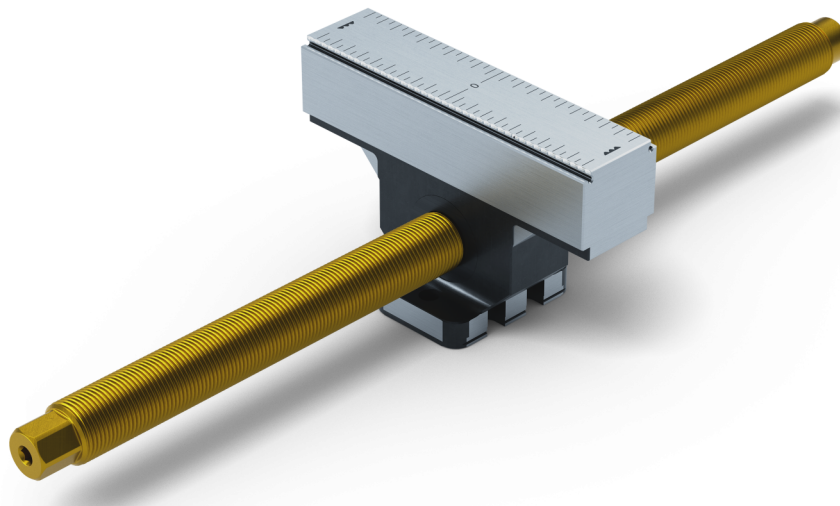


Makro-Grip® FS 125, Center Jaw + Spindle

jaw width 125 mm, jaw thickness 27 mm, spindle length 364 mm

Item No. 48355-TG2527 FS



Spindle length	364 mm (14.33")
Clamping range	2 x 160 mm (6.3")
Thread pitch	M20 x 1.5
Dimensions	Jaw width: 125 mm (4.92")
Workpiece shape	prismatic
Packaging Unit	1 Piece
Weight	2.19 kg (4.83 lbs)
Material	Steel

Makro-Grip® FS 125, Center Jaw + Spindle

jaw width 125 mm, jaw thickness 27 mm, spindle length 364 mm

Item No. 48355-TG2527 FS

