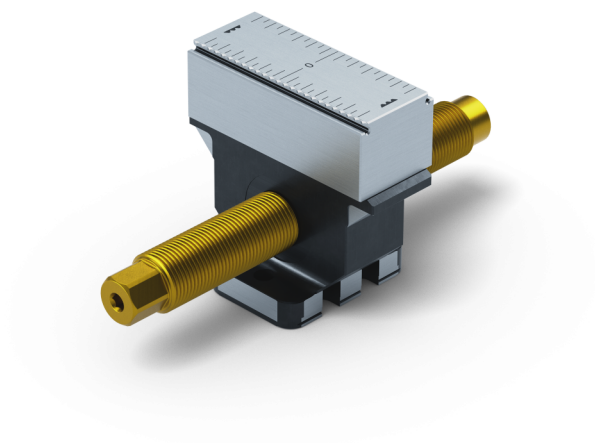


Makro-Grip® FS 125, Center Jaw + Spindle

jaw width 77 mm, jaw thickness 27 mm, spindle length
164 mm

Item No. 48155-TG7727 FS



Spindle length	164 mm (6.46")
Clamping range	2 x 60 mm (2.36")
Thread pitch	M20 x 1.5
Dimensions	Jaw width: 77 mm (3.03")
Workpiece shape	prismatic
Packaging Unit	1 Piece
Weight	1.39 kg (3.06 lbs)
Material	Steel

Makro-Grip® FS 125, Center Jaw + Spindle

jaw width 77 mm, jaw thickness 27 mm, spindle length
164 mm

Item No. 48155-TG7727 FS

