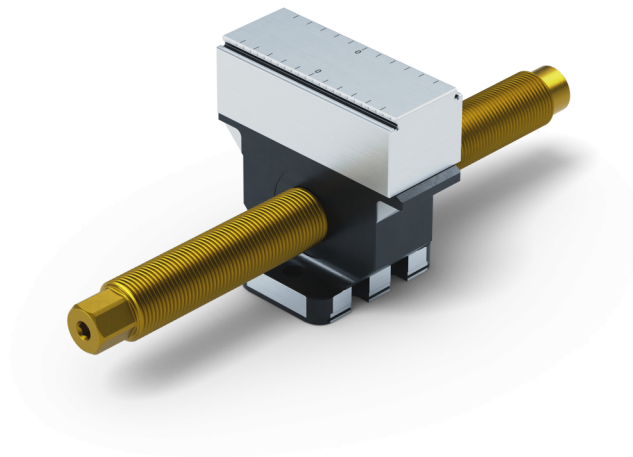


Makro-Grip® 125, Center Jaw + Spindle

jaw width 77 mm, jaw thickness 27 mm, spindle length
214 mm

Item No. 48205-TG7727



Spindle length	214 mm (8.43")
Clamping range	2 x 85 mm (3.35")
Thread pitch	M20 x 1.5
Dimensions	Jaw width: 77 mm (3.03")
Workpiece shape	prismatic
Packaging Unit	1 Piece
Weight	1.5 kg (3.31 lbs)
Material	Steel

Makro-Grip® 125, Center Jaw + Spindle

jaw width 77 mm, jaw thickness 27 mm, spindle length
214 mm

Item No. 48205-TG7727

