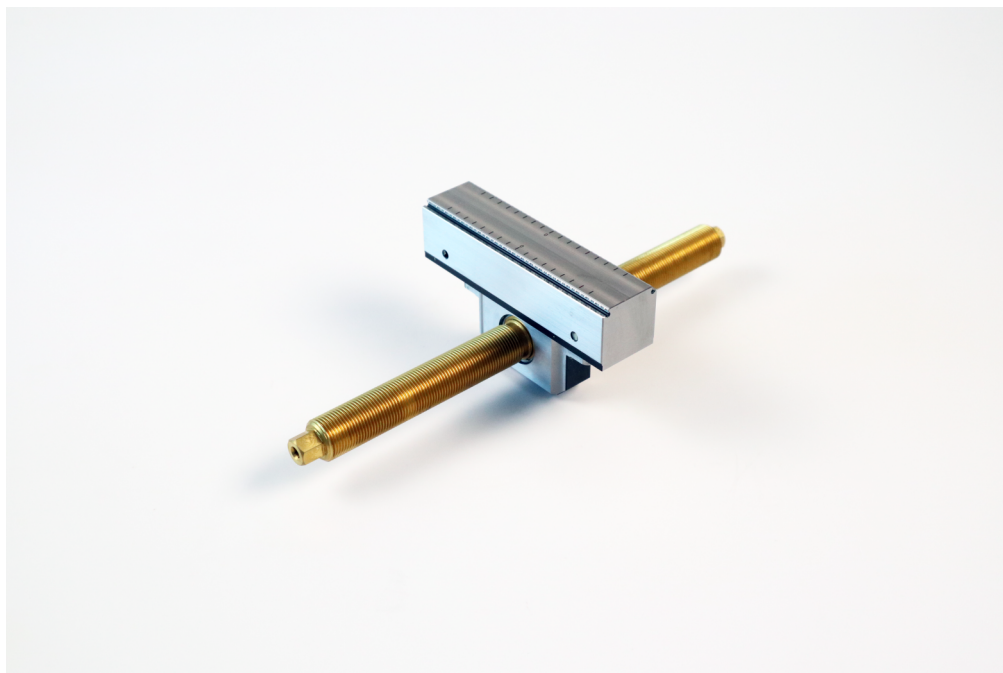


Makro-Grip® 125, Center Jaw + Spindle

jaw width 125 mm, jaw thickness 27 mm, spindle length 265 mm (old version)

Item No. 47255-TG27



Spindle length	265 mm (10.43")
Clamping range	2 x 110 mm (4.33")
Thread pitch	M20 x 1.5
Dimensions	Jaw width: 125 mm (4.92")
Workpiece shape	prismatic
Packaging Unit	1 Piece
Weight	1.85 kg (4.08 lbs)