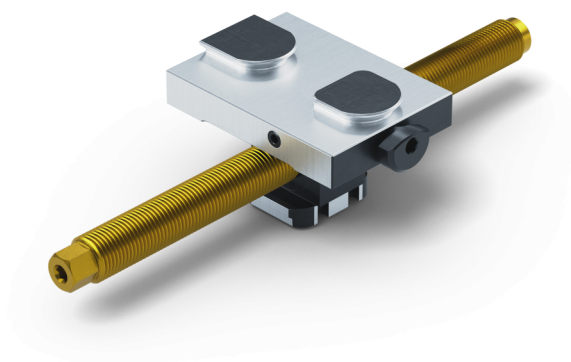


Avanti 77, Center Base Jaw + Spindle

jaw width 77 mm, spindle length 215 mm

Item No. 44200-TG77



Spindle length	215 mm (8.46")
Thread pitch	M16 x 1.5
Dimensions	Jaw width: 77 mm (3.03")
Workpiece shape	prismatic / cylindrical / asymmetrical
Packaging Unit	1 Piece
Weight	0.9 kg (1.98 lbs)
Material	Steel

Avanti 77, Center Base Jaw + Spindle

jaw width 77 mm, spindle length 215 mm

Item No. 44200-TG77

