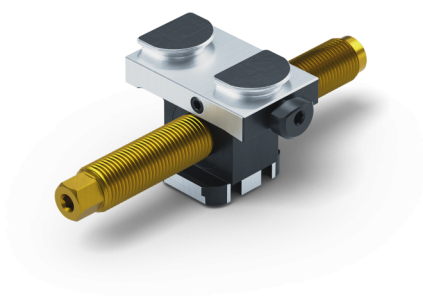


## Avanti 77, Center Base Jaw + Spindle

jaw width 46 mm, spindle length 135 mm

Item No. 44120-TG46



<b>Spindle length</b>	135 mm (5.31")
<b>Thread pitch</b>	M16 x 1.5
<b>Dimensions</b>	Jaw width: 55 mm (2.17") - Jaw length: 36 mm (1.42")
<b>Workpiece shape</b>	prismatic / cylindrical / asymmetrical
<b>Packaging Unit</b>	1 Piece
<b>Weight</b>	0.5 kg (1.1 lbs)
<b>Material</b>	Steel

## Avanti 77, Center Base Jaw + Spindle

jaw width 46 mm, spindle length 135 mm

Item No. 44120-TG46

