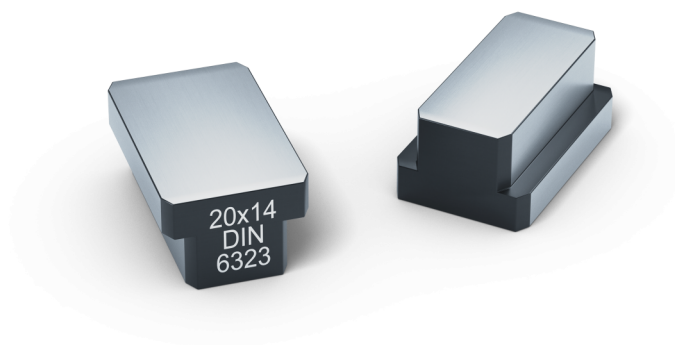


Quick-Point®, Nutenstein

DIN 6323, 20 x 14 mm

Item No. 452014



Abmessungen	14 x 20 mm
Verpackungseinheit	1 Stück
Gewicht	0.06 kg
Material	Stahl

Quick-Point®, Nutenstein

DIN 6323, 20 x 14 mm

Item No. 452014

