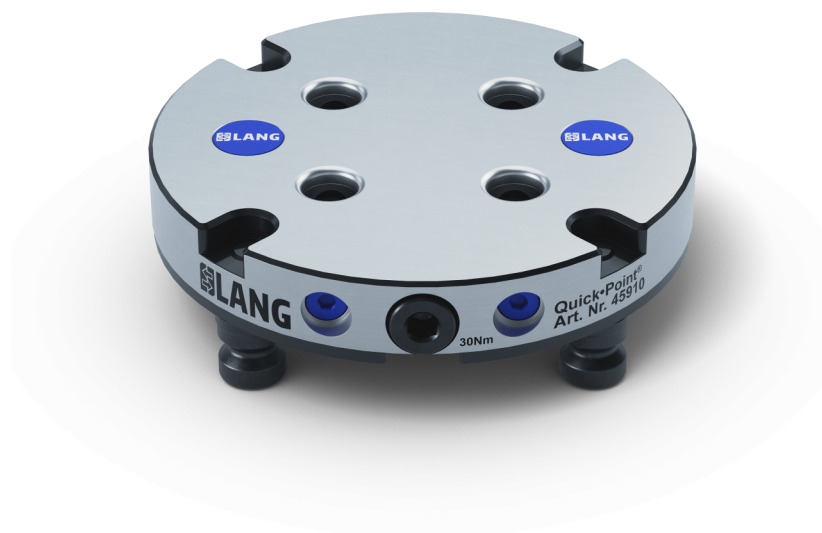


**Quick-Point®**, Adapter plate  
round, Ø 157 x 27 mm

Item No. 45910



<b>Dimensions</b>	Ø 157 x 27 mm (6.18" x 1.06")
<b>Clamping type</b>	Single clamping
<b>Mounting bores</b>	at 100 mm distance
<b>Keyways</b>	20 H7
<b>M5 indexing bores</b>	No, but possible (customisable)
<b>Packaging Unit</b>	1 Piece
<b>Weight</b>	3.6 kg (7.94 lbs)
<b>Material</b>	Steel

Quick-Point®, Adapter plate  
round, Ø 157 x 27 mm

Item No. 45910

